



HARVARD®

Harvard Cement. The Original. Since 1892.

1892
seit



Harvard Cement
normal setting
fast setting



Harvard Cement
OptiCaps®



Harvard
Polycarboxylat
Cement



EN

Harvard Cement normal setting

Zinc phosphate cement for permanent luting of crowns and bridges and for lining.

Properties

- High compressive strength
- Low film thickness
- Good biocompatibility
- Easy and safe application
- Unmatched price performance ratio
- No curing shrinkage



35 / 100 g 15 / 40 ml

The classic!
Clinically proven since 1892

Harvard Cement quick setting

Zinc phosphate cement with reduced setting time for permanent luting of crowns and bridges.

Properties

- Fast setting
- High compressive strength
- Low film thickness
- Good biocompatibility
- Easy and safe application
- Unmatched price performance ratio
- No curing shrinkage

Short setting time!



35 / 100 g 15 / 40 ml

Harvard Cement OptiCaps®

Zinc phosphate cement in capsules for permanent luting of crowns and bridges.

Properties

- Consistent application with only 10 seconds mixing time
- Direct and precise application of creamy, Homogeneous cement on the restoration
- Avoids mistakes in mixing and dosing
- Sufficient for luting of 1 - 2 crowns from each capsule

Optimal consistency & easy Handling



à 0.5 g

Harvard Polycarboxylat Cement

Polycarboxylatzement zur definitiven Befestigung und Unterfüllung.

Properties

- Non irritant for sensitive teeth
- Less irritant to the pulp than
- Easy and safe application
- Unmatched price performance ratio



35 / 100 g 15 / 40 ml

Indications of Harvard Cement

- For permanent luting of crowns and bridges, inlays and onlays on natural core and for luting supraconstructions on implants. For crowns, bridges, inlays and onlays made of:
 - zirconia
 - aluminium oxide
 - lithiumdisilicate
 - silicate
 - for conventional gold and non-precious metals

Harvard Cement normal setting additional qualified:

- For temporary fillings in posterior teeth
- As liner for all types of filling materials

Indications of Harvard Polycarboxylat Cement

- Indications of Harvard Polycarboxylat Cement For permanent luting of crowns and bridges, inlays and onlays on natural core and for luting supraconstructions on implants. For crowns, bridges, inlays and onlays made of:
 - zirconia
 - aluminium oxide
 - lithiumdisilicate
 - for conventional gold and non precious metals
- For temporary fillings in posterior teeth
- As liner for all types of filling materials

Mixing Advice



For Harvard Cement



1

Dispense onto a clean, dry glass plate powder and liquid at approx. 23 °C (73 °F).



2

Divide into 4 portions as follows: 1/2, 1/4, 1/8, 1/8.



3

Mixing: start first 1/8 with the whole liquid quartely within 15 seconds.



4

Add second 1/8 and mix for 15 seconds while spreading.



5

Draw 1/4 into the mixture.



6

Mix while pressing with flat spatula in the next 30 seconds.



7

Mix with the remaining half portion for 30 seconds to obtain an homogen mass.



8

Use the entire surface of glass plate.



9

Ready-for-use cement mix within 90 seconds.

Harvard Cement normal setting:

For luting consistency: powder 1.5 g, liquid 1.0 g
For cavity lining consistency: powder 2.1 g, liquid 1.0 g

Harvard Cement quick setting:

For luting consistency: powder 1.8 g, liquid 1.0 g

For Harvard Polycarboxylat Cement

For mixing of polycarboxylate cement the whole amount of powder is divided into two equal halves. One half is further divided into two equal parts (quarter).

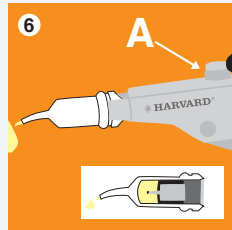
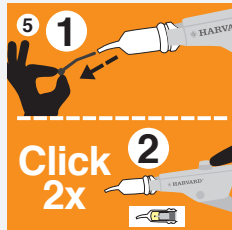
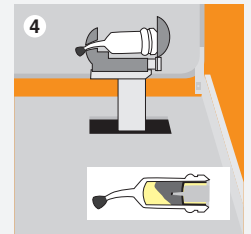
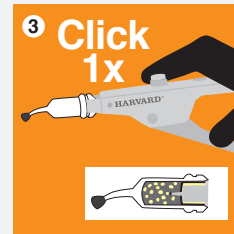
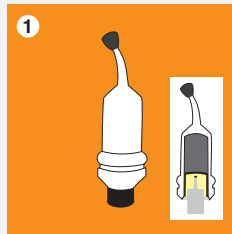
In 30 seconds mix one half of the powder into the liquid. Then the other two quarters are mixed in for another 15 seconds each. This will result in a total mixing time of 60 seconds.

The mixing ratio (by weight) of powder to liquid is 2.9 : 1 (luting cement) or 3.6 : 1 (liner).



Click before you mix.

Instructions for activating and mixing Harvard OptiCaps®



1. OptiCaps® before activation.
2. Activation: press the plunger on a hard and plane surface to the end into the OptiCaps®.
3. Insert the OptiCaps® into the Harvard Applier OptiCaps® and click once to standardize.
4. To mix capsule.
5. Insert the OptiCaps® into the Harvard Applier OptiCaps®. Remove the pin from the nozzle. If not, capsule can burst.
6. Extrude the mixed material on a glass plate or apply directly. Unlock the gun and remove the capsule.

Working times for Harvard Cement OptiCaps®

Mixing time
10 sec

Working time
90 sec (1:30 min)
from the start of mixing at 23 °C (73 °F)

Next clinical step
n/a

Article information

Harvard Cement normal setting		
Powder Shade	Order no. 35 g Single powder	Order no. 100 g Clinic powder
1 - White	7002501	7002201
2 - Bluish white		7002202
3 - Yellowish white	7002503	7002203
4 - Light yellow	7002504	7002204
5 - Yellow		7002205
8 - Pearl grey		7002208
12 - Brown		7002212
15 - Rose		7002215
Liquid	15 ml Single powder 7002600	40 ml Clinic liquid 7002300

Harvard Cement quick setting		
Powder Shade	Order no. 35 g Single powder	Order no. 100 g Clinic powder
1 - White	7001501	7001201
2 - Bluish white		7001202
3 - Yellowish white	7001503	7001203
4 - Light yellow		7001204
5 - Yellow		7001205
8 - Pearl grey		7001208
12 - Brown		7001212
15 - Rose		7001215
Liquid	15 ml Single powder 7001600	40 ml Clinic liquid 7001300

Harvard Cement OptiCaps®	
10 OptiCaps® à 0.5 g, Yellowish white	Order no. 7081310
50 OptiCaps® à 0.5 g, Yellowish white	7081350
Harvard Applier OptiCaps®	7092000

Harvard Polycarboxylat Cement		
Powder Shade	Order no. 35 g Single powder	Order no. 100 g Clinic powder
3 - Yellowish white	7031503	7031203
4 - Light yellow	7031504	7031204
Liquid	15 ml Single powder 7031600	40 ml Clinic liquid 7031300

Liability is excluded for all printing errors and omissions. Before using our Harvard products, the respective directions for use should be noticed in every case. All measurements are internal measurements of Harvard Dental International.

Harvard Distribution Partner.



HARVARD®

Marke und Qualität seit 1892

Harvard Dental International GmbH
Margaretenstr. 2 - 4, 15366 Hoppegarten, Germany
Phone: + 49 (0) 30/99 28 978-0
Fax: + 49 (0) 30/99 28 978-19
info@harvard-dental-international.de

www.harvard-dental.de